

Hospital and Health Department Relationships

- James Kravec, M.D.
- Chief Clinical Officer,
Mercy Health Lorain and
Youngstown
- Medical Director,
Mahoning County Public
Health
- September 23, 2025



alamy

Image © 2019/2020
www.alamy.com



Ways to think of Medicine in 2005

Inpatient Units



```
graph TD; A[Inpatient Units] --> B[Emergency Departments]; B --> C[A few medical practice sites];
```

Emergency Departments

A few medical practice sites

New ways to think of Medicine in 2025

All of that from 2005 plus.....

A lot more medical practice sites

Palliative Care

And...

- Population Health
- Community Health
- Public Health

Population Health

- The overall health and well-being of a specific group of people, such as a community, city, state, or country.
- Focuses on understanding and improving the health outcomes of these populations by addressing the factors that influence their health
 - Social Determinants of Health
 - Behavioral Factors
 - Environmental Factors
 - Healthcare Access and Quality

Community Health

- The overall health and well-being of a group of people who share a common geographic area or social identity.
- Encompasses:
 - Physical health: Access to healthcare, disease prevention, and treatment
 - Mental health: Emotional well-being, mental health services, and support systems
 - Social health: Community cohesion, social support, and access to education
 - Environmental health: Clean air and water, safe housing, and protection from hazards

Public Health

- Focus on protecting and improving the health of populations and communities
- Encompasses:
 - Disease prevention: Identifying and controlling the spread of infectious and chronic diseases.
 - Health promotion: Encouraging healthy behaviors and lifestyles, such as physical activity, healthy eating, and smoking cessation.
 - Environmental health: Ensuring safe air, water, and food supplies.
 - Injury prevention: Reducing the incidence of accidents, violence, and other injuries
 - Policy development and advocacy: Working to create laws and regulations that promote health
 - Surveillance and evaluation: Monitoring health trends and evaluating the effectiveness of public health interventions.

CHA/CHIP

Basic requirements
of the Community
Health Needs
Assessments and
Community Health
Improvement Plan

- Impact on public health
- Impact on hospitals/health systems

Hospitals/health
systems work with
public health

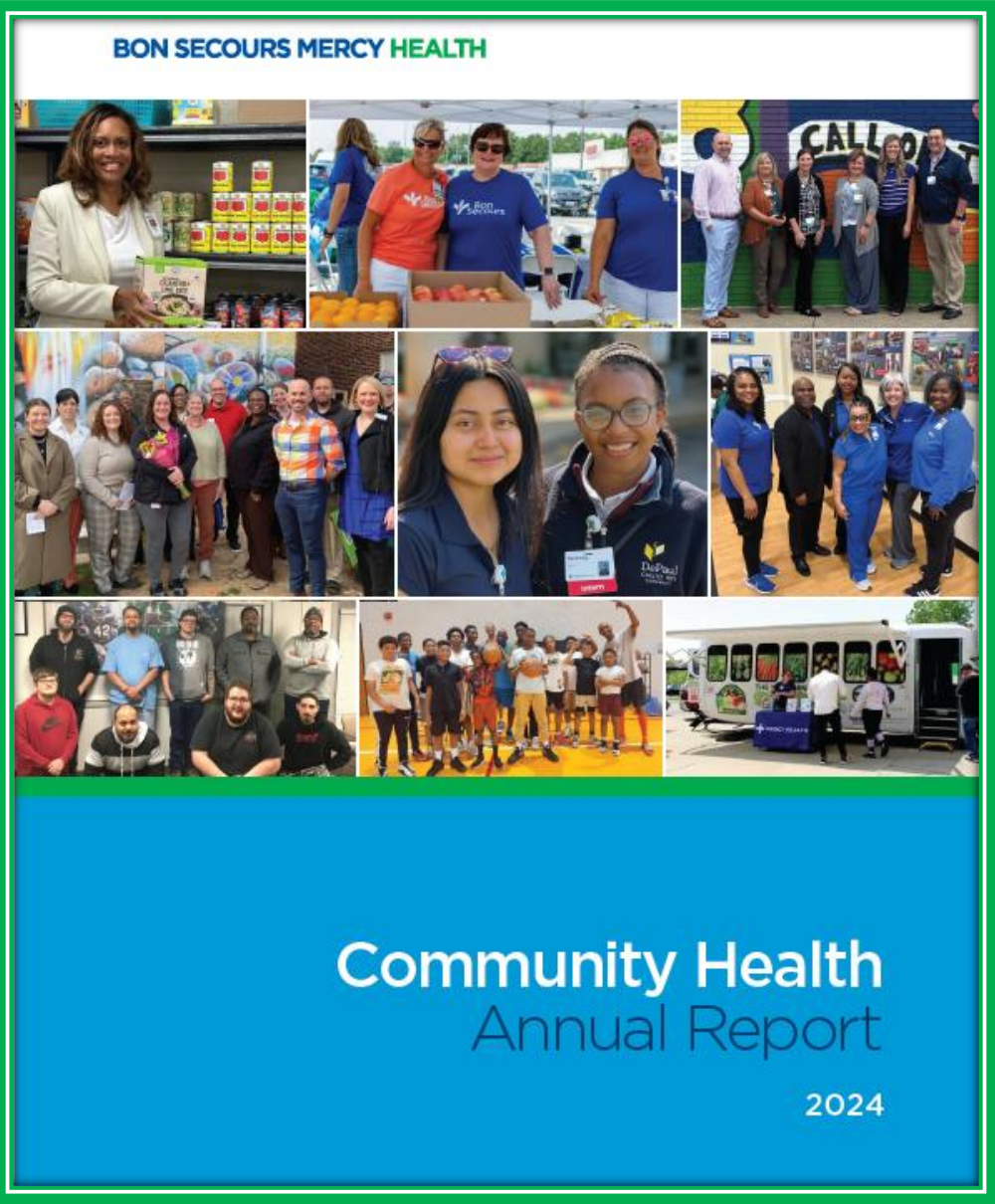
- Assessment
- Plan



Community Health Implementation Plan (CHIP)

- The CHIP is also a triennial IRS requirement, due May 15th in the year after the CHNA is due.
- Hospitals must adopt an Implementation Plan to meet the identified & prioritized community health needs in each CHNA
- Describe the actions/strategies the hospital intends to take to address the health need and the anticipated impact of these actions
- Identify the resources the hospital plans to commit to address the health need
- Describe any planned collaboration with internal or external partners
- Explain why, if any, health needs will not be addressed
 - Not required to address all identified & prioritized needs
 - Ex: Community partner may be better able to meet a given need.

Summary: 2024 Community Health Programs



2024 Reporting

142 Health & Social Programs

300+ Community Partners

230,000 Individuals Served

\$1M in Philanthropy Provided

\$7.5M in Loan Capital Invested

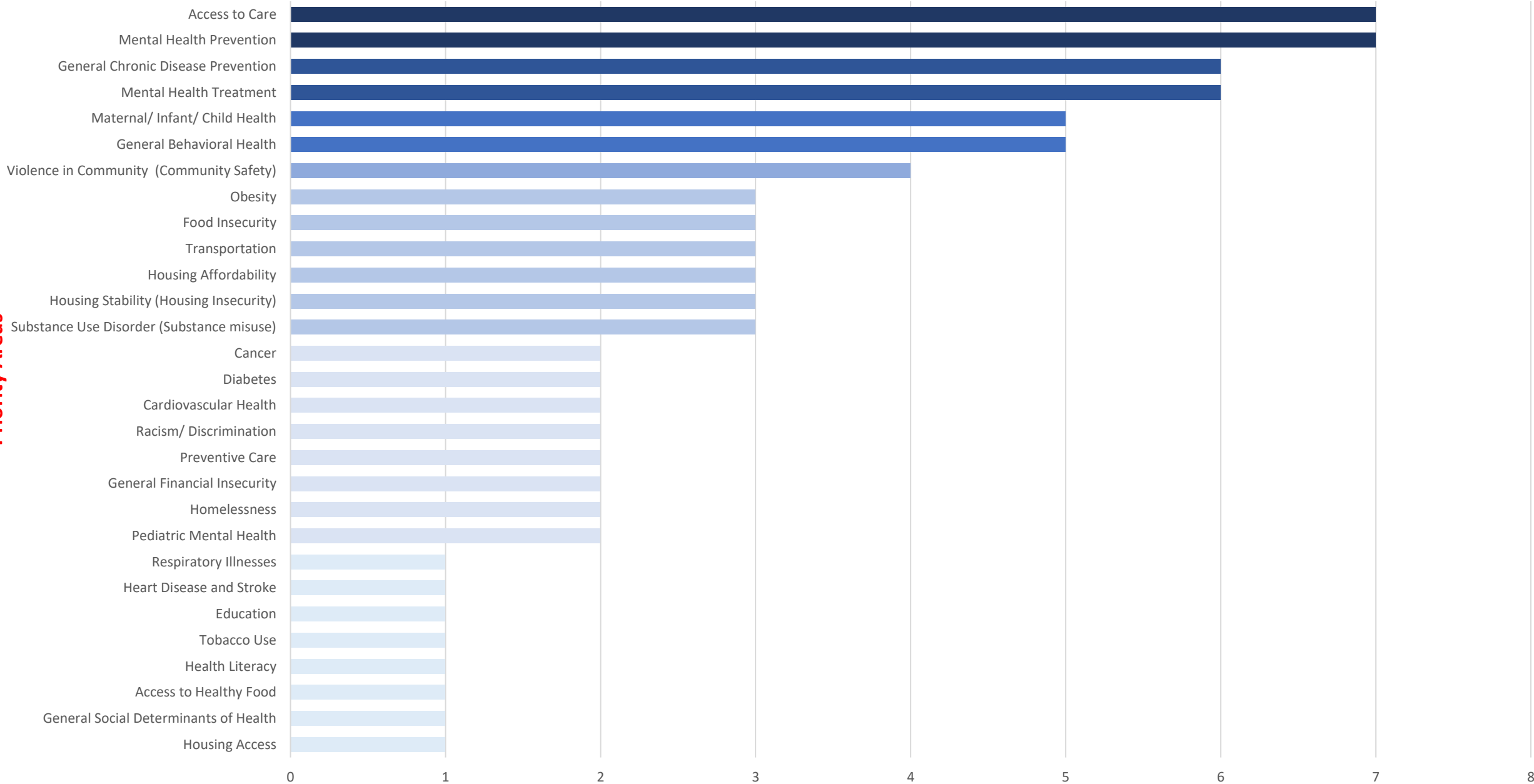
2025 CHNA Engagements Across BSMH

- Surveys:
 - 15,000+ survey responses
- Focus Groups:
 - 87 Focus Groups conducted
 - 900+ Focus Group Participants
- Interviews:
 - 150+ Key Informant Interviews conducted
- **Total Engagements: 16,000+**



2025 CHNA Priorities

Priority Areas



of Markets Selecting the Priority

Graduate Medical Education

Core Curriculum

Next level “practical” education

- Public health
- Community health

Primary Care



WIC OFFICES



INFECTION PREVENTION
EPIDEMIOLOGIST INTERACTIONS



VACCINE
SHARING

Physician
Leadership in
Health
Systems/Hospitals

CCO

CMO

VPMA

Medical Director

What is a day like for a CCO?

Hospital

ACO

Medical
Group

Quality

Recruitment

GME

Public
Health

Media

Health System: Key Challenges 2025



Rising Costs &
Utilization



Workforce
Strain



Cybersecurity
Threats



Regulatory &
Policy
Landscapes

Public Health: Key Challenges 2025



REINFORCING PUBLIC
HEALTH
INFRASTRUCTURE AND
WORKFORCE



ADDRESSING SOCIAL
DETERMINANTS OF
HEALTH



TACKLING
SPECIFIC
HEALTH
THREATS



EMBRACING
TECHNOLOGY
AND
INNOVATION

How are these differences reconciled?



- How can a hospital work with a public health department?

