



emPOWER Data

September 19, 2024

Christina Dew, Hospital Preparedness Planner

emPOWER Data

HHS emPOWER Map and REST Service



Publicly available on <https://empowermap.hhs.gov/>

HHS emPOWER Emergency Planning De-identified Dataset

| Services | All Power Dependent | |
|------------------------------|---|-----------------------------|
| # At-Home Hospice (3 months) | # Electricity-Dependent Devices and DME | # Cardiac Devices (5 years) |
| 11 | 44 | 50 |
| 50 | 13 | 11 |
| 50 | 13 | 11 |
| 11 | 44 | 50 |

Restricted to Public Health Authorities

(routinely shared with LHDs)

HHS emPOWER Emergency Response Outreach Individual Dataset

INDIVIDUAL LEVEL DATASET - All At-Risk Individuals
 POPULATION - Medicare population is restricted to alive beneficiaries as of November 2014
 NA indicates that that the at-risk population is not included in this request.

NOTE: All data are fictitious and used for illustrative purposes only

| Name | | | Other Information | | Address |
|-----------------------|------------|-----------|-------------------|----------------------|---------------------------|
| Initial Sorting Order | First Name | Last Name | Date of Birth | Enrollment/Plan Type | PO Box or Unknown Address |
| 1 | Anne | Smith | November 4, 1944 | FPS | 0 |
| 2 | Amy | Brown | February 19, 1955 | MA | 0 |
| 3 | John | Taylor | December 20, 2028 | MA | 0 |
| 4 | Jane | Doe | March 4, 1966 | FPS | 0 |

Secure, restricted to authorized Public Health Authorities

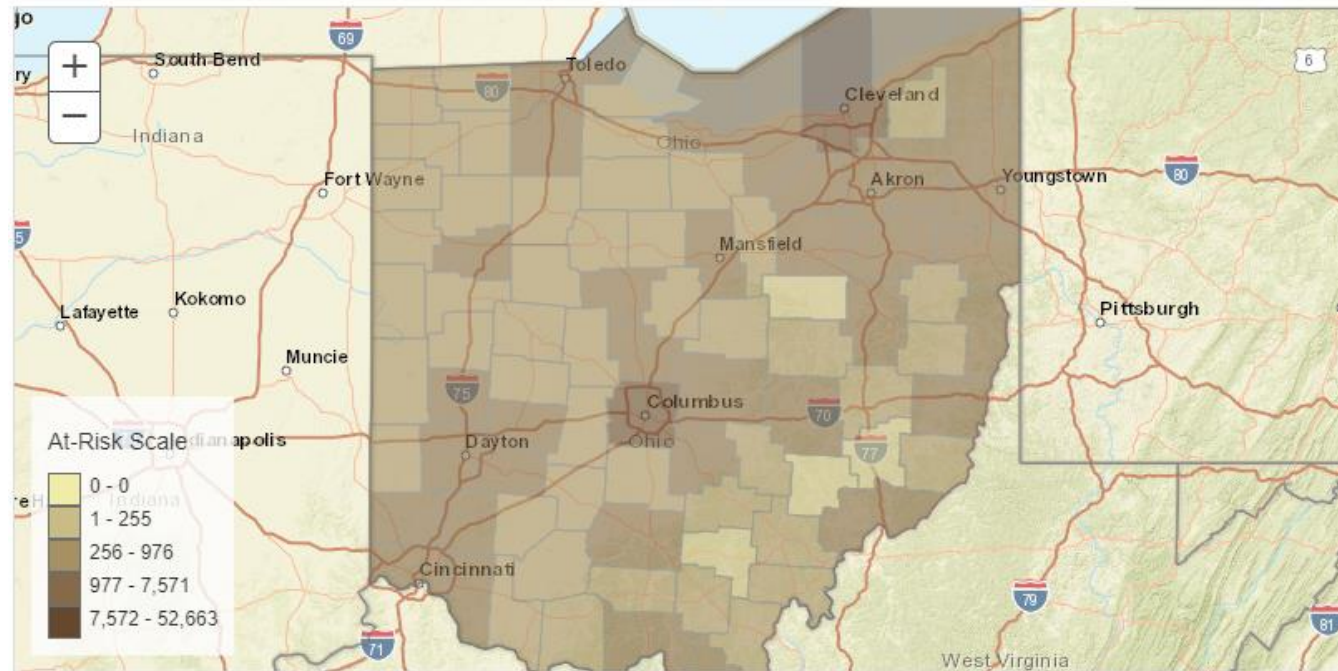
emPOWER Map

Select a state: Ohio
Select a county: Select a County
Select a ZIP Code: Select a ZIP Code
At-Risk Data (Optional): Electricity Dependent DM

RESET MAP

SELECTED GEOGRAPHIES

Ohio



Extreme Heat

Select a state

Ohio

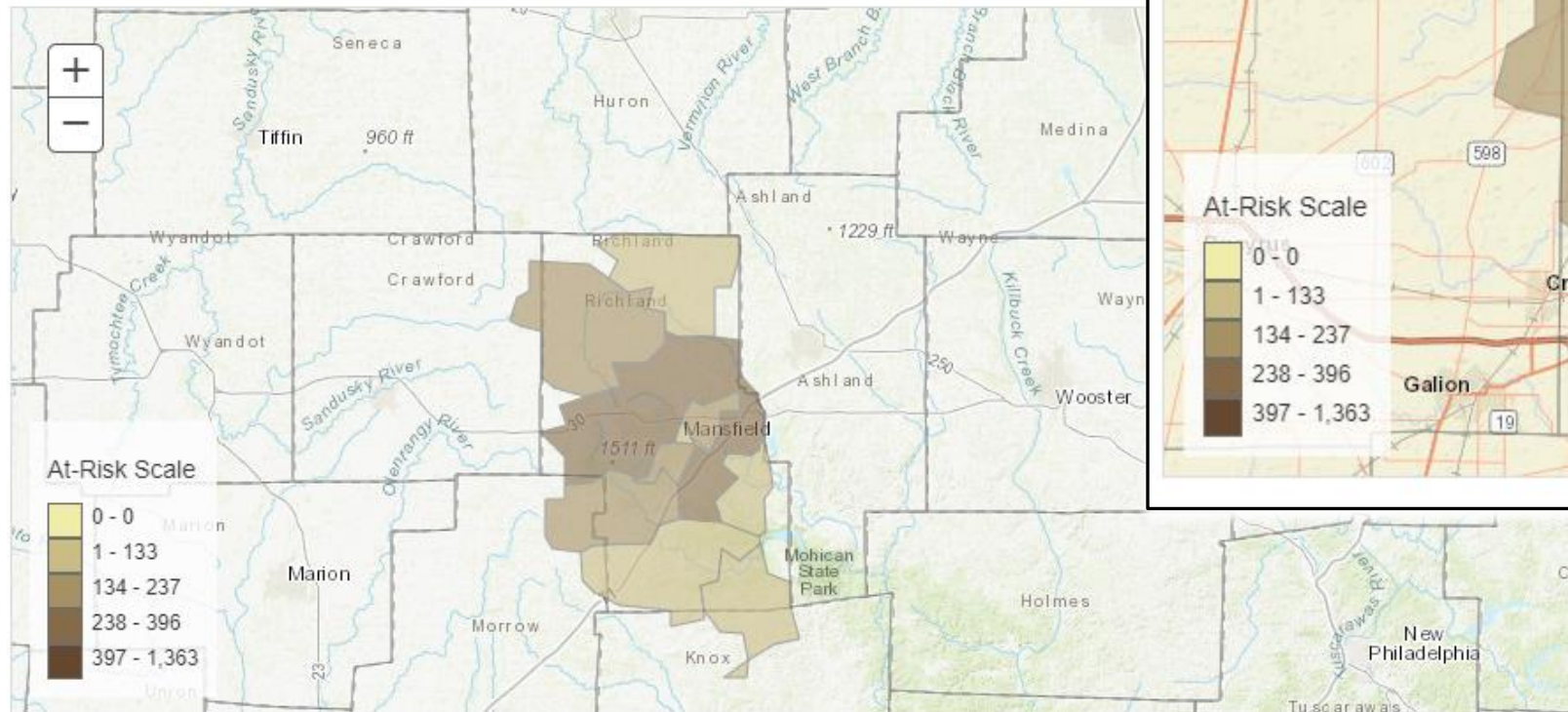
Select a county

Richland

ADD ADDITIONAL COUNTIES

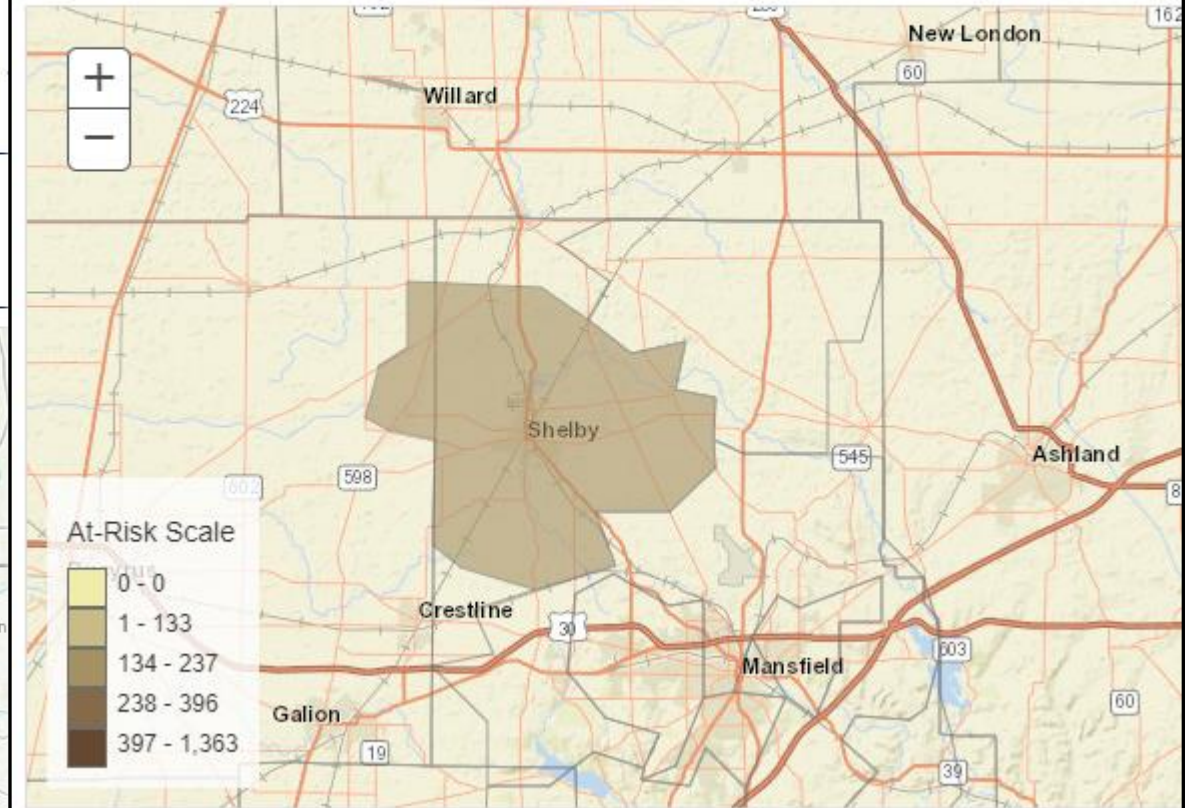
SELECTED GEOGRAPHIES

Richland X



SELECTED GEOGRAPHIES

44875 X



Department of Health

Elements Included

Power Dependent Devices and DME

| | | | | | | | | | |
|--------------------------------|------------------------------|-------------------------|--------------------------------------|----------------------------------|---------------------------------------|--------------------------------|--|--|--------------------------------|
| # Cardiac Devices (5 years) | # Ventilators (13 months) | # BiPAPs (13 months) | # O2 Concentrators (36 months) | # Enteral Feeding (13 months) | # IV Infusion Pumps (13 months) | # Suction Pumps (13 months) | # At-Home ESRD Dialysis (3 months) | # Motorized Wheelchairs or Scooters (13 months) | # Electric Beds (13 months) |
|--------------------------------|------------------------------|-------------------------|--------------------------------------|----------------------------------|---------------------------------------|--------------------------------|--|--|--------------------------------|

Services Included



In-Facility Dialysis Services

In-Facility ESRD
(3 months)



Oxygen Services

Oxygen Services [Tanks]
(13 months)



Home Health Services

Home Health
(3 months)



At-Home Hospice Services

At-Home Hospice
(3 months)



Department of Health

Pre-Event Emergency Planning

- Population-Based Situational Awareness.
- Emergency Planning Activities, Plans, Exercises.
- Develop Process to Utilize Systems and Data.
- Identify Areas and Resources Needs.

De-Identified Data

- Locations of At Risk Populations.
- Identify Public Health Needs.
 - Healthcare Resources.
- Inform Shelter Locations and Community Resources.
- Prioritize Essential Services.
 - Power Restoration.
 - Communications.
- Deploy Emergency Response Assets.
 - Staff/Volunteers or equipment.

Requesting Identified Data

- Requesting Data.
 - State – HHS.
- Control of Access.
- Proper Disposal.

Using Identified Data

- Public Health Engagement.
 - Mail Outreach.
 - Resources.
- Response Targeted Outreach.
 - Wellness Checks.
 - Outreach Calls.
- Home Health Agency Outreach.
 - Engage with Service Providers.
- Shelter Operations.
 - DME Equipment Support.
 - Power Supply.

Indian Lake Tornado

At least 3 dead, 25 injured from EF3 tornado in Logan County

Indian Lake Schools and other buildings are being used as shelters for impacted residents.



Author: 10TV Web Staff, Associated Press
Published: 1:17 AM EDT March 15, 2024
Updated: 6:25 PM EDT March 15, 2024

Power Outages

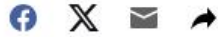
More than 300K still without power in Ohio after storm slams greater Cleveland



[Natalie Neysa Alund](#)

USA TODAY

Published 11:10 a.m. ET Aug. 7, 2024 | Updated 11:22 a.m. ET Aug. 7, 2024



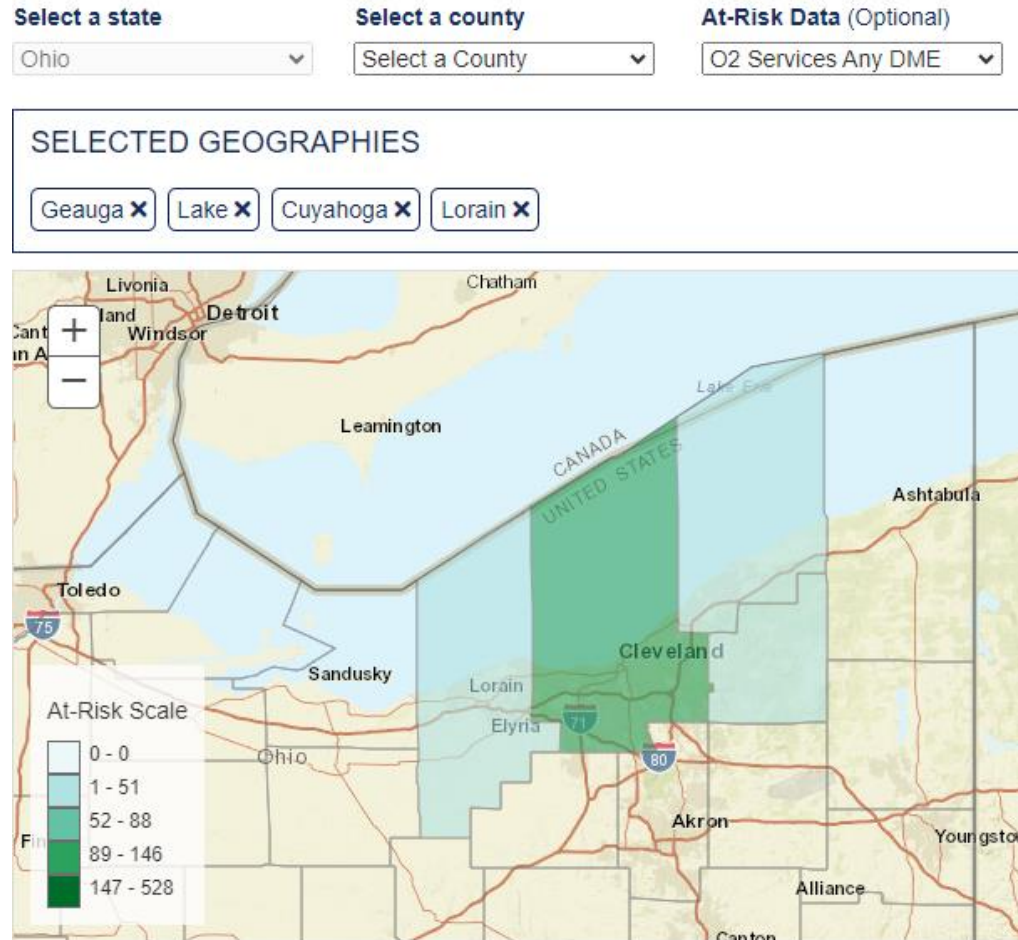
Severe storms leave thousands without power in northeast Ohio

Severe storms downed powerlines, causing widespread outages in northern Ohio with more than 340,000 customers still without power according to FirstEnergy.



Department of
Health

Oxygen Supplies



'Reserves are running out': Clevelanders scramble to find oxygen as power outage continues

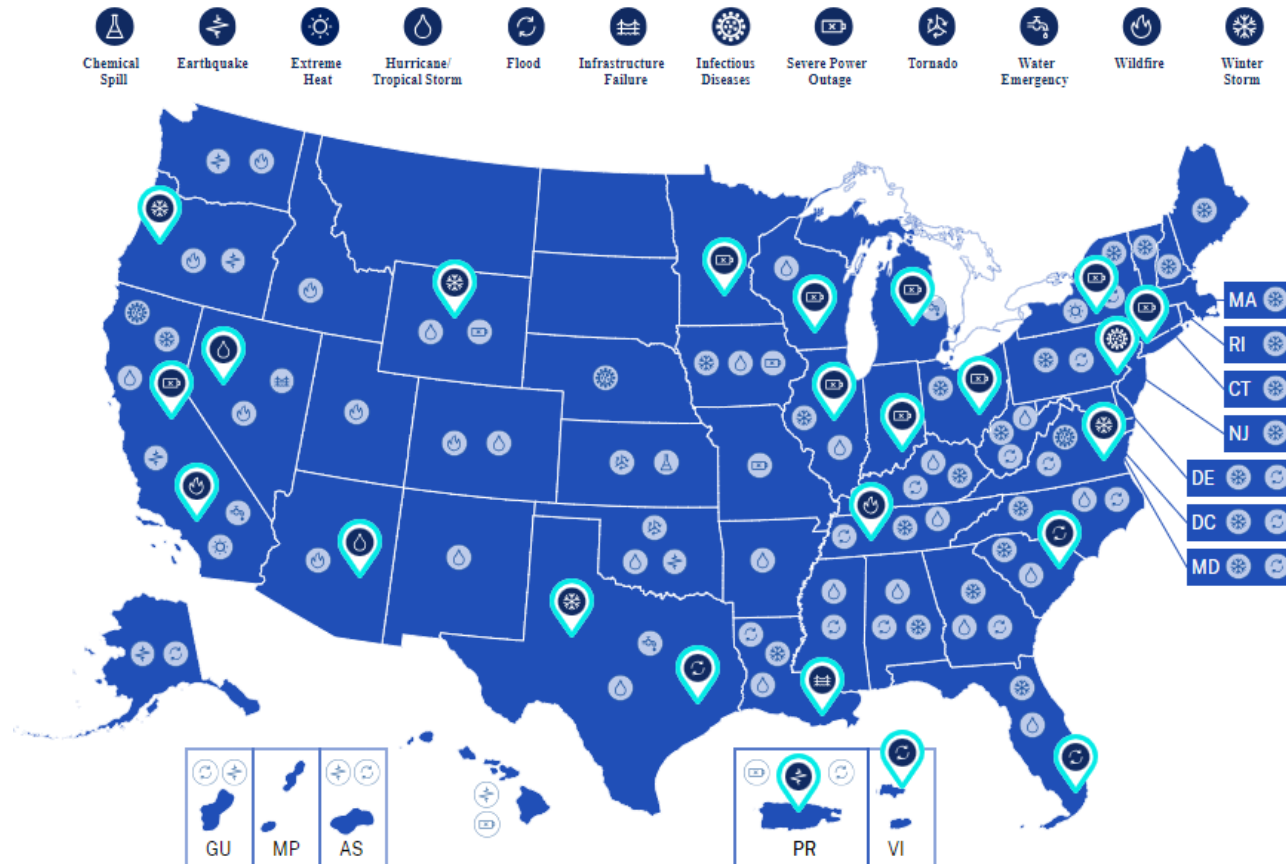
Cuyahoga County will have a mobile "oxygen generator" available to fill tanks Saturday.

by Stephanie Casanova and Dakotah Kennedy
August 9, 2024



A mobile oxygen generator from the Ohio Department of Health will be available this weekend to refill oxygen tanks. Credit: Rachel Dissell / Signal Cleveland

emPOWER in Action



Acquired Population-Level Situational Awareness for Regional Planning

A regional partnership including Illinois, Indiana, Michigan, Minnesota, and Ohio, Wisconsin used the emPOWER Emergency Planning De-identified Dataset to help develop FEMA's multi-state regional power outage plan, which aims to address needs at the local level in the event of a severe widespread power outage.

Takeaways

- emPOWER Program.
- Power Dependent Devices, DME, and Services.
- Using the Data.
 - Pre-event.
 - Real World Incident.

QUESTIONS?

ODH.OHIO.GOV



**Department of
Health**



**Department of
Health**