

Addressing Community Planning and Response Inequities Surrounding Those with Access and Functional Needs

Tiffany Allen, M.S.

ASTHO Disability and Preparedness Specialist

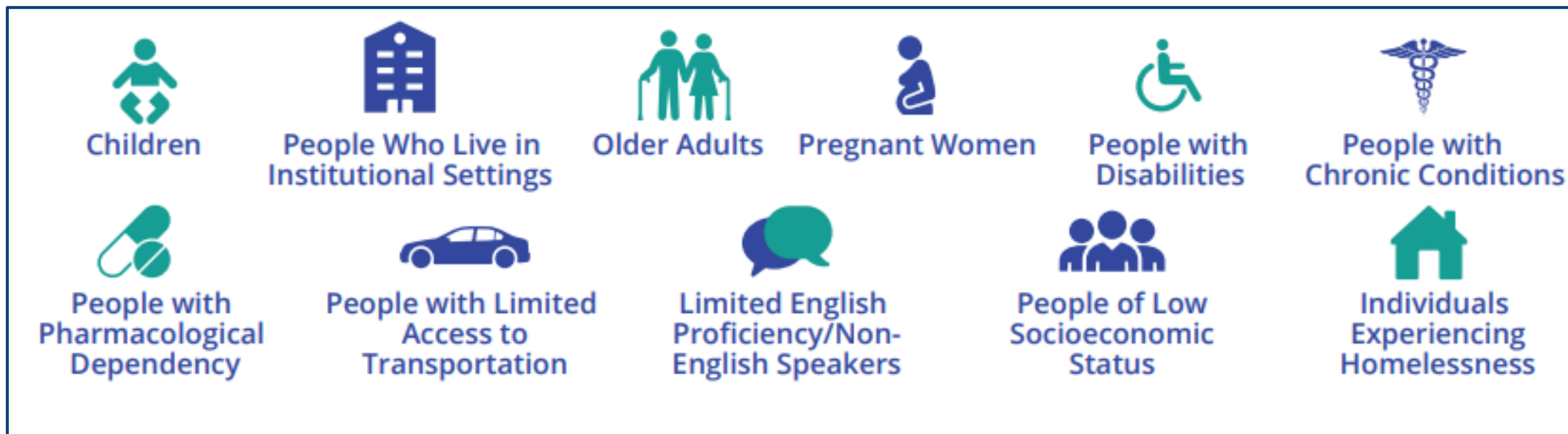
Goal and Objective

Goal: To strengthen the integration of our most vulnerable citizens in all conversations, planning, and response activities.

Objective: Following this presentation attendees will be able to begin addressing community inequities and inaccessibility for their most vulnerable residents, and build trust within the disability community.

AFN Considerations

- Let's level set.
- AFN Community members include:



In Reality...

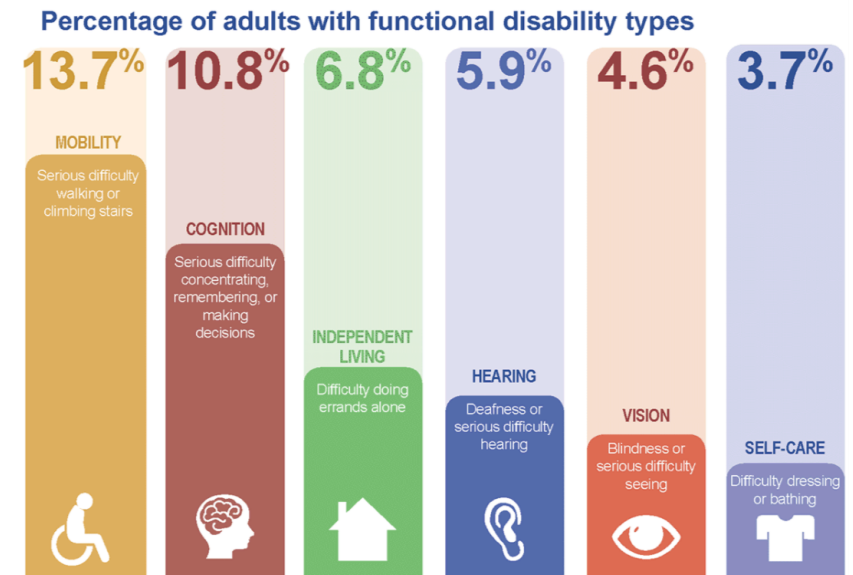


➤ 26% (1 in 4) U.S. adults has a disability.

➤ Disability can impact

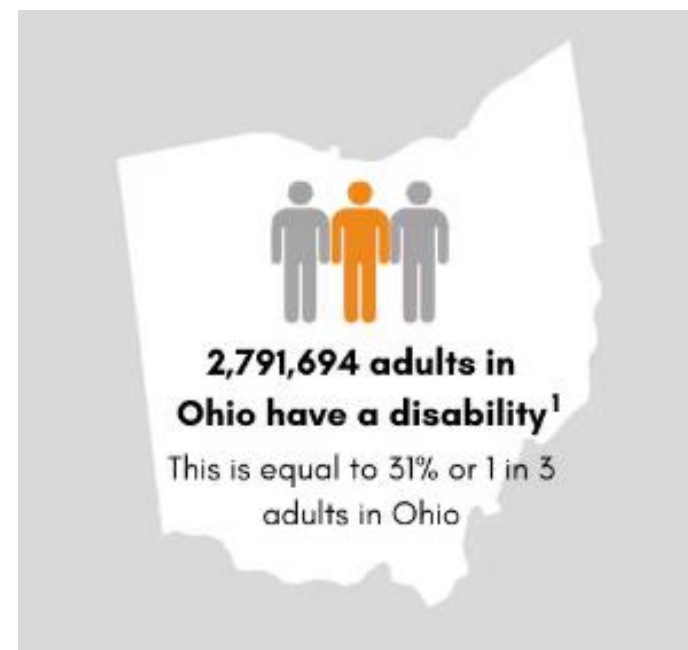
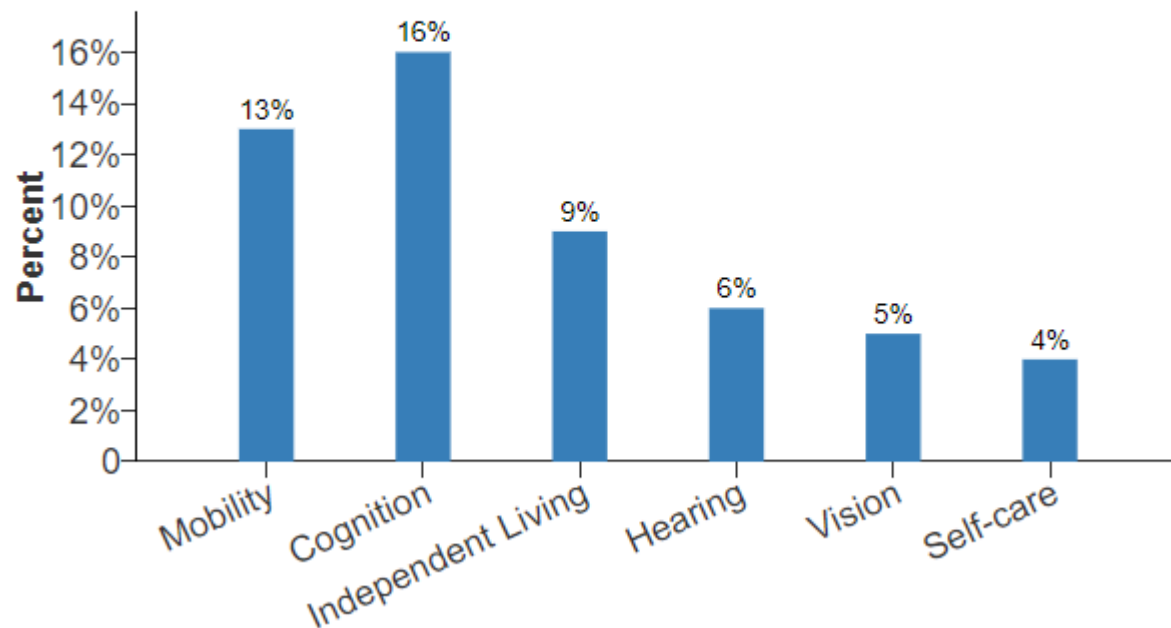
- Mobility.
- Sensory.
- Development.
- Mental health.

➤ The reality is that just about everyone will experience disability at some time.



Did You Know?

Percentage of adults in Ohio with select functional disability types



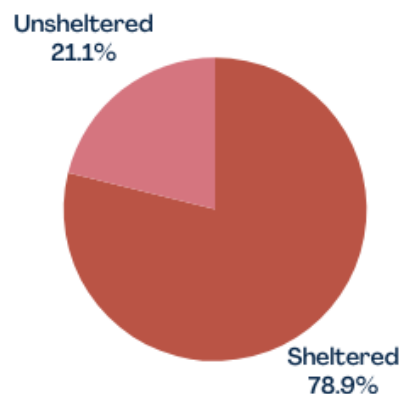
Source: CDC's National Center on Birth Defects and Developmental Disabilities

Did You Know?

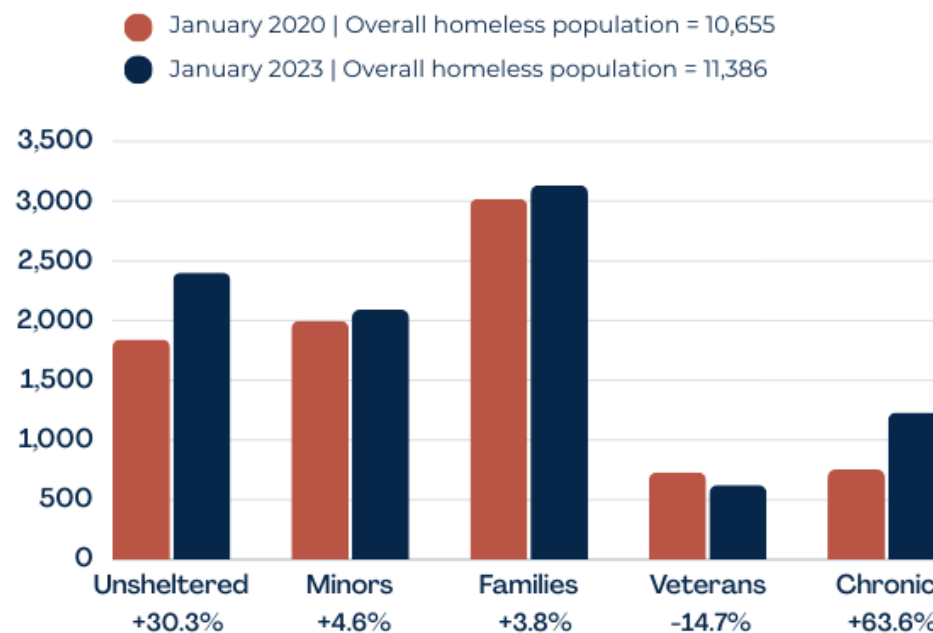
In 2023 homelessness increased 6.9% in Ohio: 12.1% nationally

- Winding down of pandemic related resources.
- Decreased capacity in shelters.
- Rent prices increased 24% from 2020-2023.

Sheltered and Unsheltered Homelessness 2023



Homelessness in Ohio since the Pandemic



Source: Coalition on Homelessness and Housing in Ohio

~~“Do the Most for the Most”~~

- This is a common refrain in public safety services.
- However, this mentality needs to shift.

Integration of AFN into Exercise Design and Development

This, unfortunately, is what it looks like.

Major Federal Disability Policies

Americans with Disabilities Act (ADA)



Rehabilitation Act



Fair Housing Act



Air Carrier Access Act



Individuals with Disabilities Education Act (IDEA)



Federal Plain Language Guidelines



Post-Katrina Emergency Management Reform Act/2006



HPP's Integration of Whole Community

Communities most impacted by disasters

Throughout this NOFO, we refer to “communities most impacted by disasters.” This term is inclusive of:

- At-risk individuals, including children, pregnant individuals, older adults, or others who may have access and functional needs in the event of an emergency, such as those with chronic physical or behavioral health conditions or immunocompromised individuals. (8)
- Individuals may also be at risk due to their geographic location and/or limited access to health care, such as those in rural, frontier, or otherwise isolated areas.

HPP is a whole-of-community endeavor that connects health care entities at the local, state, regional, and national levels to plan for and respond to emergencies and disasters by:

- Addressing community needs.
- Building connectivity.
- Saving lives.

Whole Community Planning and Universal Design

- What is it, exactly?

Whole Community is defined by FEMA as, "a means by which residents, emergency management practitioners, organizational and community leaders, and government officials can collectively understand and assess the needs of their respective communities and determine the best ways to organize and strengthen their assets, capacities, and interests."

- Principles
 - Understand and meet the actual needs of the whole community.
 - Engage and empower all parts of the community.
 - Strengthen what works well in communities daily.
- However! It's not *just* for disaster planning...

The Curb Cut Effect

"...the impact of this kind of design is so significant that the term *curb cut effect* was coined. The curb cut effect states that *when you design for disabilities, you make things better for everyone in the process*. For example, curb cuts on sidewalks made it easier for people pushing strollers, the elderly with walkers, or those rolling a bag behind them."

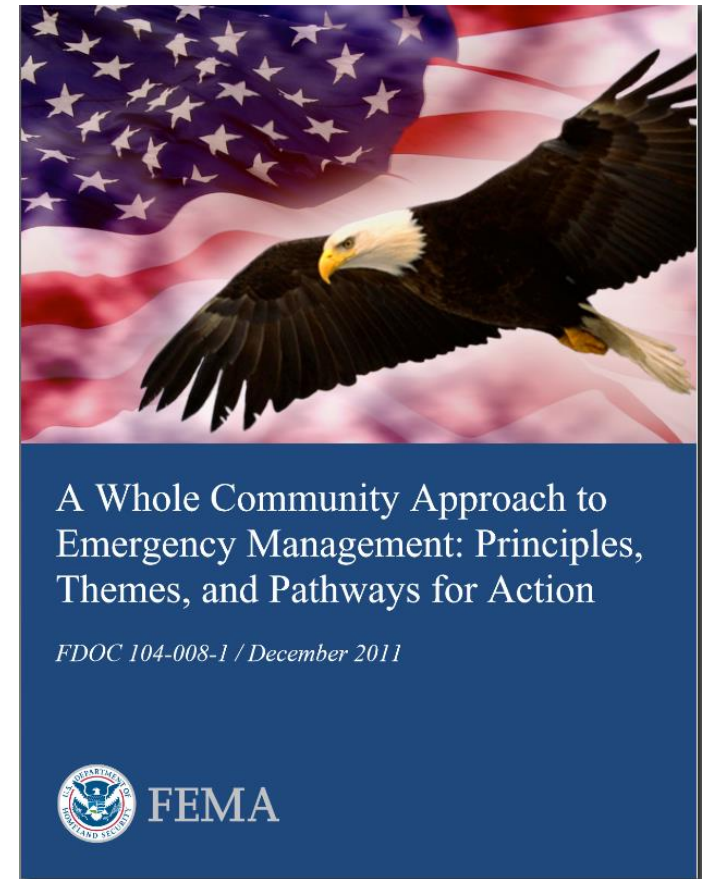
[The curb cut effect: How universal design makes things better for everyone | by Emma Sheridan | UX Collective \(uxdesign.cc\)](#)



Planning and Exercise Resources

- Whole Community Approach.
- Individuals with Disabilities and other AFNs are one sub-set of the whole community.
- Preparedness must consider all sub-sets of the community.


https://www.fema.gov/sites/default/files/2020-07/fema_whole-community_120211.pdf



Planning and Exercise Resources

- Mass Care and Emergency Assistance Planning.
- Consideration for Individuals with Disabilities and other AFNs is one part of MC/EA.
- Service animals are another.


<https://www.fema.gov/disaster/coronavirus/best-practices/mass-careemergency-assistance-pandemic-planning-considerations-guide>



Mass Care/Emergency Assistance Pandemic Planning Considerations

For State, Local, Tribal, Territorial and Non-Government Organizational Planners, Providers and Support Agencies

June 2020

 FEMA

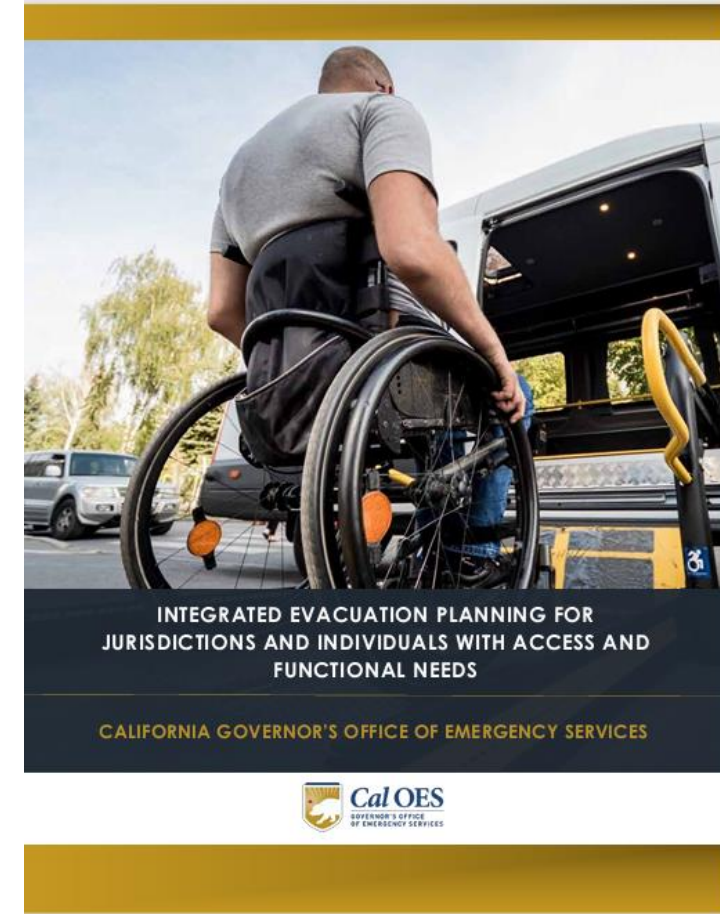
Planning and Exercise Resources

[Cal-OES-Integrated-Evacuation-Planning-Guide.pdf](#)

- Section 1: Inclusive Planning Best Practices.
- Appendix A: Transportation Agreement Checklist.

"Identifying transportation providers when identifying potential transportation providers to partner with, jurisdictions should be innovative and think beyond traditional resources. Examples of potential transportation partners include: "

Hotel Shuttles	Adult Day Health Care (ADHC)	Tour Companies	Healthcare Centers
Amusement Parks	Area Agencies on Aging	Senior Centers	School District Transportation Systems
Recreation Centers	Airport Shuttle Buses	Airport Rental Cars	Disability Service Providers
Casino Shuttles	Independent Living Centers	Regional Centers	Taxi Services
Tour Bus Companies	County Fairgrounds Shuttles	Private Ride Share Companies	Churches/Religious Institutions



Planning and Exercise Resources



National Center on Disability in Public Health
Public health is for everyone.

Prepared4ALL is offered by AUCD's National Technical Assistance and Training Center on Disability Inclusion in Emergency Preparedness and aims to build capacity for collaboration among people with disabilities, disability organizations and their networks, and local emergency management and public health departments to build trust, create sustainable relationships, and for people with disabilities to get a seat at the emergency planning table.

[Emergency Preparedness – AUCD's National Center on Disability in Public Health \(nationalcenterdph.org\)](http://nationalcenterdph.org)

Trust Building Continued: How to Take Action to Include People with Disabilities

Inclusion model applied in emergency preparedness

- Inclusion model shown is helpful with:
 - Equity in planning.
 - Community collaborations.
 - Disability data.



Reference: 2023, Owen, L.; Griffen, A.; Augustin, D.; and Wolf-Fordham, S. Prepared4ALL: Increasing Disability Inclusion and Equity in Local Emergency Planning. Collaborations: A Journal of Community-Based Research and Practice, Accepted, in press.

Learn more: <https://nationalcenterdph.org/our-focus-areas/emergency-preparedness/prepared4all/>

Trust Building

- Understand that it's impossible for you to be the expert in this challenging field, don't pressure yourself to be.
- If you haven't already, contact and build a solid relationship with your **community-based organizations. Your direct service providers are a wealth of information.**
- View them as invaluable local, *equitable* partners that should participate in all planning and response activities and teams.
- **Show Up!** Build the relationships *before* you need them.
- Representation = Experience.

How to Take Action to Include People with Disabilities

The Arc

- Nearly 600 state and local chapters nationwide.



QUESTIONS?



Department of
Health

Resources

- [Post-Katrina Emergency Management Reform Act of 2006 - Homeland Security Digital Library \(hsdl.org\)](https://hsdl.org/).
- <https://www.fema.gov/glossary/whole-community>.
- [Strategies for Disaster and Vaccine Equity for People with Disabilities - World Institute on Disability \(wid.org\)](https://wid.org/).
- [Homepage - National Council for Mental Wellbeing \(thenationalcouncil.org\)](https://thenationalcouncil.org/).
- <https://www.ncbi.nlm.nih.gov/pmc/articles/PMC8074254/> (Compassion Fatigue).



**Department of
Health**