



MEDICAL PROGRAM – BY THE NUMBERS

Metric	Number
Licensees	
Cultivators	37
Processors	46
Testing Labs	7
Dispensaries	141
Total	231
Patients/Caregivers/Physicians	
Registered Patients (Historical)	436,009
Active Patients (Purchasing)	162,059
Caregivers	40,292
Physicians (Certificates to Recommend)	589

INITIATED STATUTE – NON-MEDICAL LICENSES

- **Level I cultivator:** issued **three** non-medical dispensary licenses and one non-medical cultivator license at the current facility location.
- **Level II cultivator:** issued **one** non-medical dispensary license and one non-medical cultivator license at current facility location.
- **Processor:** one non-medical processor license at current facility location.
- **Testing Lab:** one non-medical lab at current facility location.
- **Dispensary:** issued a non-medical license for the current location and **one** additional dispensary if the dispensary does not have common ownership or control of a cultivator or processor.
- **Social Equity:** requires the Division to issue **forty** Level III non-medical cultivator licenses and **fifty** non-medical dispensary licenses with a preference to applications who are participants under the **cannabis social equity and jobs program**. The **Department of Development** shall establish the cannabis social equity and jobs program, adopt rules, and certify applicants.

*Division has authority (after 24 months) to issue more adult-use licenses to meet demand.

INITIATED STATUTE – NON-MEDICAL LICENSE TIMELINE

Date	Statutory Requirement
December 7, 2023	Statute became effective 30 days after approval.
June 7, 2024 (six months)	Deadline to issue non-medical license applications.
September 7, 2024 (nine months)	Deadline to issue non-medical licenses.

PROJECTED DISPENSARIES

Dispensaries	Number	Timing
Dual-Use (Medical/Non-Medical)	141	August 6 th certificates of operation (rolling basis)
10(B) Dispensaries	+168	Provisional licenses issued by September 7th
Total Non-Medical Dispensaries (Current Operators)	309	Q2 2025 (Est.)
Non-Medical Social Equity Dispensaries	+50	TBD (Social Equity and Jobs Program)
Total Non-Medical (Including Social Equity)	359	

INITIATED STATUTE – KEY PROVISIONS

- **Possession and Home Grow:** Allow Ohioans aged 21 years or older to buy and possess 2.5 ounces of cannabis and 15 grams of concentrates and grow up to 6 plants in secure places at home (12 plant cap per household).
- **Regulatory:** Department of Commerce (Division of Cannabis Control) to regulate and license non-medical cannabis market, including administrative investigatory and enforcement authorities.
- **Excise Tax and Program Funds:** Imposes a 10% tax (on top of sales tax) with tax revenue divided among the following:
 - Cannabis social equity and jobs fund (36%)
 - Host community cannabis facilities fund (36%)
 - State substance abuse and addiction fund (25%)
 - Division of Cannabis Control and Tax Commissioner fund (3%)
- **Cultivation Area Expansion:**
 - Allows Level I cultivators to expand to 100,000 sq/ft and Level II cultivators to expand to 15,000 sq/ft once an adult use license is issued.
 - Allows Level III adult use cultivator have up to 5,000 sq/ft of cultivation are and any additional expansion must be approved by the Division.
- **Background Checks:** requires criminal background checks of owners, operators, officers, board members, and licensed employees of cannabis operators and labs.

INITIATED STATUTE – PROHIBITIONS AND INSTITUTION PROTECTIONS

- **Consumption Prohibitions:**
 - Prohibits use of cannabis by those individuals under 21 years of age.
 - Prohibits use while driving as well as smoking or vaporizing by vehicle passengers.
 - **Public Consumption:**
 - Cannabis consumption is subject to the Ohio smoking ban and bars/restaurants with liquor permits can't knowingly allow the use of controlled substances, which includes marijuana.
 - Non-medical cannabis consumer who uses non-medical cannabis in public areas is guilty of a minor misdemeanor.
- **Location Prohibitions:**
 - Allows cities, villages, and townships to prohibit or limit non-medical operators.
 - No cannabis operator shall be within five hundred feet of a "prohibited facility," which includes a school, church, public library, public playground, or public park. "School" means a public or nonpublic primary or secondary school, childcare center, and preschool.
 - Permits landlords to prohibit home grow and smoking of cannabis if the prohibition is included in lease agreement.
- **Rights of the Employer:**
 - Maintains "Rights of Employer" provisions to allow employers to refuse to hire or otherwise take an adverse employment action due to the individual's use, possession, or distribution of cannabis.
- **Academic Research:**
 - Does not restrict research related to cannabis at a state university, academic medical center, or private research and development organization as part of a research protocol approved by an institutional review board or equivalent entity.

INITIATED STATUTE – CANNABIS ADDICTION SERVICES

- **Cannabis Addiction Services Program:** Division of Cannabis Control and Department of Mental Health and Addiction Services agreement under which the Department will establish a program for cannabis addiction services which includes best practices for education and treatment for individuals with addiction issues related to cannabis or other controlled substances including opioids.
- **Substance Abuse and Addiction Fund:** The Director of Mental Health and Addiction services to administer the substance abuse and addiction fund to support addiction services or other services that relate to addiction and substance abuse, and research that relates to addiction and substance abuse.
- **Toll-Free Telephone Number:** The Department of Mental Health and Addiction services shall establish, operate, and publicize an in-state, toll-free telephone number Ohio residents may call (24 hours/7days) to obtain basic information about addiction services available to consumer, and options for an addicted consumer to obtain help.
- **Informational Resources:** License holders required to provide informational resources for patrons related to cannabis addiction issues and services.
- **Employee Training:** License holders required to provide training for their employees regarding the cannabis addiction services resources for patrons related to this section.

DIVISION STAKEHOLDER ENGAGEMENT



CANNABIS REGULATION IN OHIO

1. Brief overview of supply chain/ terminology
2. Best Practices Implemented:
 - ✓ Security Requirements
 - ✓ Seed-to-Sale Tracking
 - ✓ Child Safety Measures
 - ✓ Packaging and Labeling
 - ✓ Product Safety
 - ✓ Quality Assurance Testing

CANNABIS CULTIVATION



Seeds

Germination
2 - 7 days



Seedling



2 - 3 weeks



Vegetative Stage

3 - 16 weeks



Flowering Stage

7 - 12 weeks

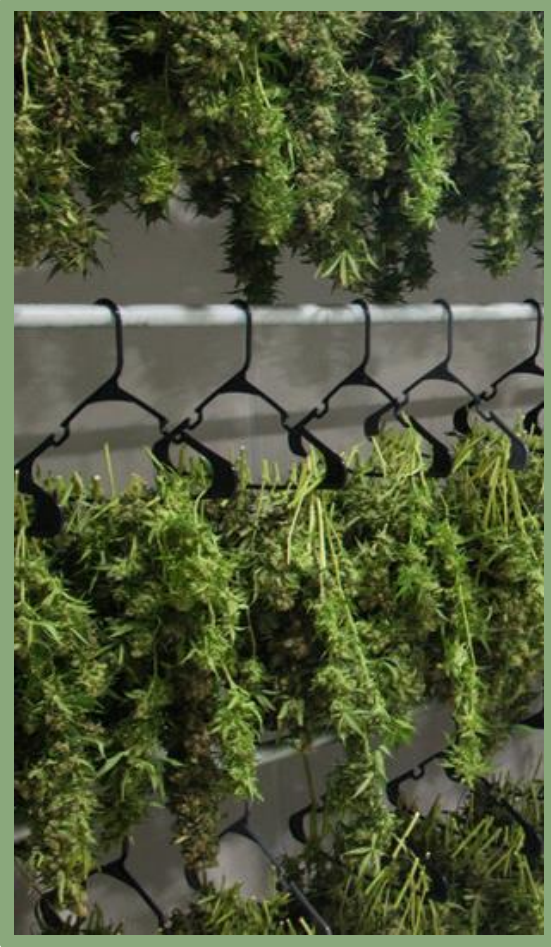


Mother Plant



Clone

CANNABIS HARVESTING



Drying
(2 – 7 days)



Trimming/ Manicuring



Curing
(2 – 8 weeks)

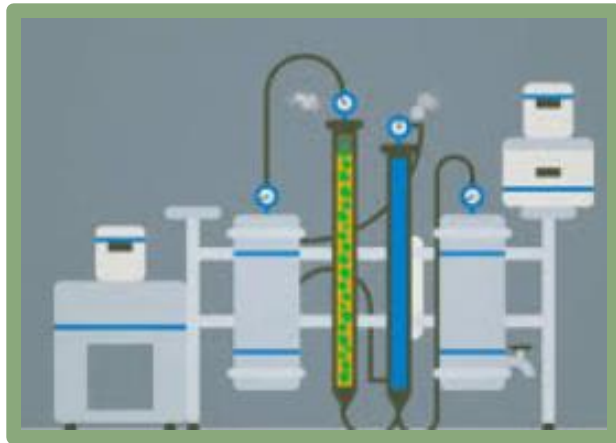


Manicured Flower (“Buds”)



Shake/ Trim

CREATION OF CANNABIS PRODUCTS



Solvent-Based Extraction



Non-Solvent Extraction



Cannabis Concentrate



SECURITY REQUIREMENTS

- ✓ Alarms to detect unauthorized intrusion
- ✓ Perimeter fencing, exterior lighting
- ✓ Video camera requirements:
 - Complete coverage, with day/night vision as needed
 - Direct feed to all video cameras provided to the DCC
- ✓ Product security: Cannabis must be stored in a locked, limited-access area
- ✓ Employee Identification Cards required for all owners, employees, and anyone who may significantly influence or control the license. Includes a background check and fingerprints.
- ✓ Visitors must sign a visitor log, wear a visitor badge, and be escorted by a key employee

SEED-TO-SALE TRACKING

- ✓ Tracking and tracing software allows the DCC to monitor the movement, testing and sale of all Ohio cannabis
- ✓ Detailed audit trail allows for identification of employee theft
- ✓ Detection of diversion and inversion
- ✓ Integration of laboratory testing
 - Untested and/or failed product cannot be transferred into a dispensary
 - Allows the DCC to monitor laboratory results for trends and unusual activity
- ✓ Precise inventory visibility

CHILD SAFETY MEASURES

- ✓ No images on packaging or that are attractive to children:
- ✓ No products that are shaped in a manner attractive to children (i.e., fruit) or that resemble commercially available candy products
- ✓ Universal THC symbol on packaging
- ✓ Childproof packaging required
- ✓ Nothing obscene or indecent (including cannabis strain names)
- ✓ Advertisement restrictions:
 - No ads within 500 feet of a school, church, public library, public playground, or public park.
 - No ads on vehicles, billboards, radio, television, cable or internet programming.

PRODUCT SAFETY

- ✓ Procedures for sanitary growing, handling, storing, and processing of cannabis
- ✓ Restrictions on pesticides and solvents used
- ✓ Restrictions on hemp ingredients
- ✓ Cannabis edibles:
 - Limitations on THC content
 - Demarcation of servings
 - Universal THC symbol required on each serving (stamped or molded)
 - Label warnings
- ✓ Product recall procedures
 - Seed-to-sale tracking software enables rapid location and quarantine of products

QUALITY ASSURANCE TESTING

- ✓ Each batch or lot must be tested
- ✓ The test sample must be collected by the testing laboratory (no self-collected samples)
- ✓ Representative, aseptic sampling
- ✓ Testing requirements depend on product type and intent
- ✓ Product that fails testing must be destroyed; failures for certain tests permitted to be safely remediated into another product.
- ✓ All cannabis testing laboratories must be accredited to ISO 17025 standards

QUALITY ASSURANCE TESTS

Product Safety and Quality:

Water Activity

Foreign Matter Examination

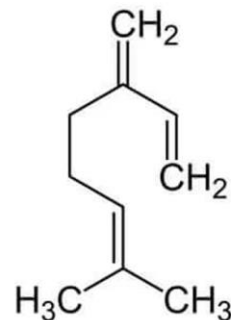
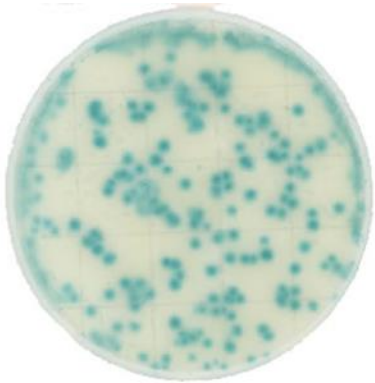
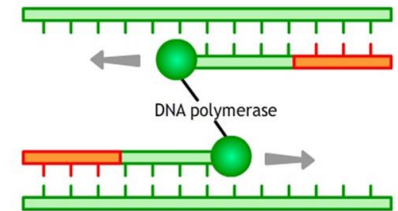
Heavy Metals

Pesticides, Herbicides and Growth Regulators

Aflatoxins (B1, B2, G1 and G2) and Ochratoxin A

Microbiological Contamination

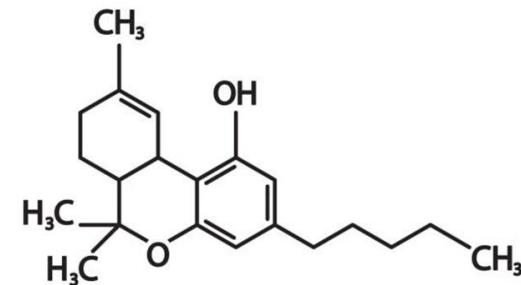
$$a_w = \frac{P}{P_0}$$





Chemical Composition:

Cannabinoids

Terpenes





HOW TO IDENTIFY A PRODUCT FROM AN OHIO DISPENSARY

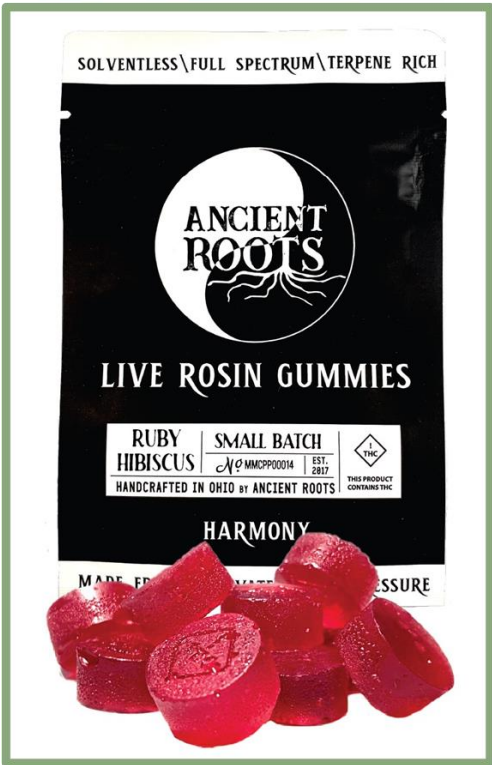
	<p><u>Universal THC Symbol</u></p> <ul style="list-style-type: none">✓ Required on the packaging✓ Minimum size 1/4" x 1/4"✓ Stamped or molded directly into each serving
	<p><u>DCC Logo</u></p> <ul style="list-style-type: none">✓ Required on front panel of packaging beginning October 14, 2024

OHIO CANNABIS PRODUCTS












PRODUCT FACTS		THIS PRODUCT CONTAINS THC.			
Product ID: M00000912813: Edb Oral Admin 10-11 Gummy Watermelon Lime 1:1 THC:CBC UBG000					
Net Weight:	41.80 g	 	Cannabinoids (Per Package)		
Serving Size:	3.80 g (1 Gummy)		Total THC:	117.04	mg
Servings per Container:	11		Delta-9 THC:	117.04	mg
THC per Serving:	10.64 mg		THCA:	0.00	mg
CBC per Serving:	11.29 mg	Delta-8 THC:	0.00	mg	
Batch Number:		THCV:		0.00	mg
1A4070100001325000040640		Total CBD:		0.00	mg
Manufacture Date:	7/10/2024	CBD:		0.00	mg
Testing Date:	7/16/2024	CBDA:		0.00	mg
Package Date:	7/18/2024	Tested By:		North Coast Testing Laboratories, LLC CCL000014-00	
Exp. Date:	7/9/2025	Extraction Method: CO2 BUTANE, PROPANE, ETHANOL			
Ingredients:				WATER, SUGAR, PECTIN (CONTAINS SUCROSE, CITRIC ACID), BAKING SODA, CANNABIS OIL, CANNABICHROMENE (CBC), SUNFLOWER LECITHIN, CITRIC ACID, NATURAL FLAVORS, SPIRULINA EXTRACT (FOR COLOR), TARTARIC ACID	
Allergens:				none	
Caution. When eaten or swallowed, the effects and impairment caused by this drug may be delayed. This product is for medical use and not for the resale or transfer to another person. This product may cause impairment and may be habit-forming. Should not be used by women who are pregnant or breastfeeding. This product may be unlawful outside the state of Ohio.					
Manufactured By: One Orjin CCP000023-00					

OHIO CANNABIS PRODUCTS (CONT.)



UNIVERSAL THC SYMBOLS

	<p>Nevada</p>		<p>California</p>		<p>New York</p>
	<p>Michigan</p>		<p>Ohio Colorado Florida</p>		<p>New Jersey Montana</p>
	<p>Oregon</p>	 <p>CONTAINS THC NOT SAFE FOR KIDS OR PETS</p>	<p>Oklahoma Delaware</p>		<p>Maine Massachusetts Rhode Island</p>

THESE PRODUCTS ARE NOT FROM OHIO DISPENSARIES



DIVISION OF CANNABIS CONTROL RESOURCES

- Division of Cannabis Control site: www.com.ohio.gov/cannabiscontrol
- Non-Medical Cannabis FAQ: www.com.ohio.gov/nonmedicalcannabis
- Program Update (Monthly): <https://com.ohio.gov/divisions-and-programs/cannabis-control/licensee-resources/what-we-do/mmcp-program-update>
- Sign Up to Receive Division Updates:
<https://public.govdelivery.com/accounts/OHDOC/subscriber/new>



COM.OHIO.GOV