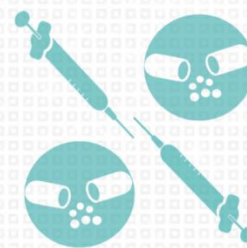
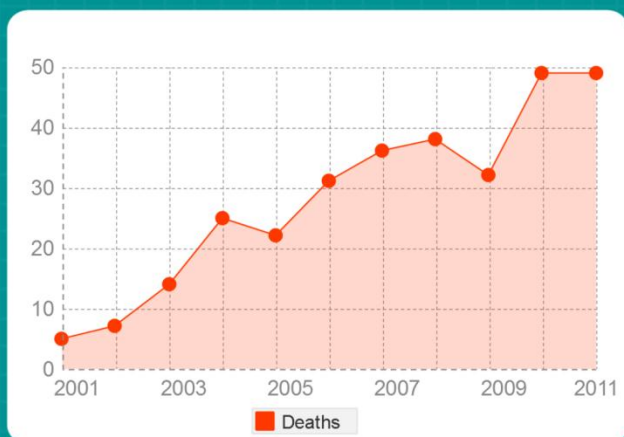




The Impact of OPIATE ADDICTION



In Clermont County, the consequences of drug addiction are pervasive, impacting the health and well-being of individuals, families and the community.



Unintentional drug overdose deaths in Clermont County increased 880% between 2001 - 2011¹

The population of Clermont County is 197,363**



In 2013, 46% of the 275 removals of children from their homes in Clermont County were due to caregiver drug use in the home⁶



Health risks of substance abuse include infection with Hepatitis B & C, & HIV/AIDS. Lifetime costs to treat Hep C is \$64,000-\$100,000^{2,3}



48% of the 147 arrests made by the Clermont County Narcotics Unit in 2013 were related to heroin/opiate use, manufacture or distribution⁴



Heroin addiction treatment - intensive treatment plus 1 year of medication - costs approximately \$11,000, or 2.75 times the cost of traditional drug treatment⁵

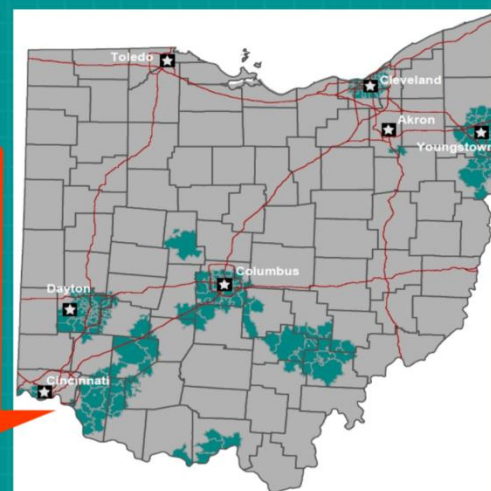


In 2010, drug poisoning hospitalizations occurred at a rate of 44 per 100,000 in Clermont County, which is double the state rate¹



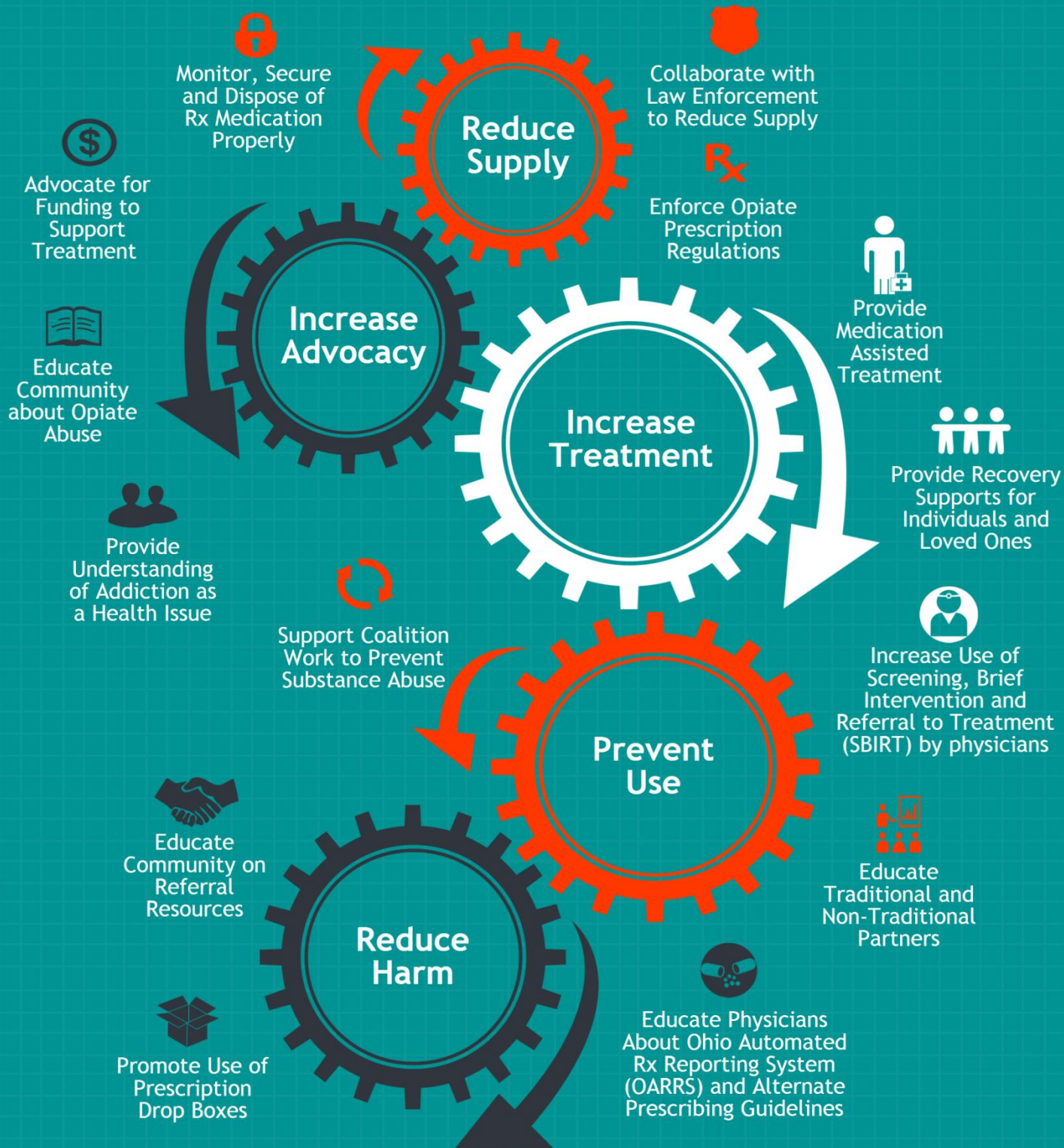
Drug poisoning emergency department visits among Clermont County residents occurred at a rate of 75 per 100,000, which was higher than the state rate¹

Clermont County is among several areas in Ohio with high rates of heroin use.



2012 heroin "hot spots" based on treatment by client zip code [per 10,000 persons]⁷

Clermont County Opiate Response Plan



For more information or resources on treatment of addiction, the Clermont County Opiate Response Plan, or Opiate Task Force, contact the Clermont County Mental Health and Recovery Board at (513) 732-5400 or visit the website at www.ccmhrb.org.